

Revisions:

OWNER / DEVELOPER:  
**RED LINK MANAGEMENT  
CORP**  
2750 NE 185TH ST. #304  
AVENTURA, FLORIDA 33180

PROJECT:  
**FOLIO 4942-03-27-0012  
PROPOSED SHELL BLDG @  
2100 WEST ATLANTIC BLDG**  
2100 W ATLANTIC BLVD  
POMPANO BEACH, FLORIDA 33069

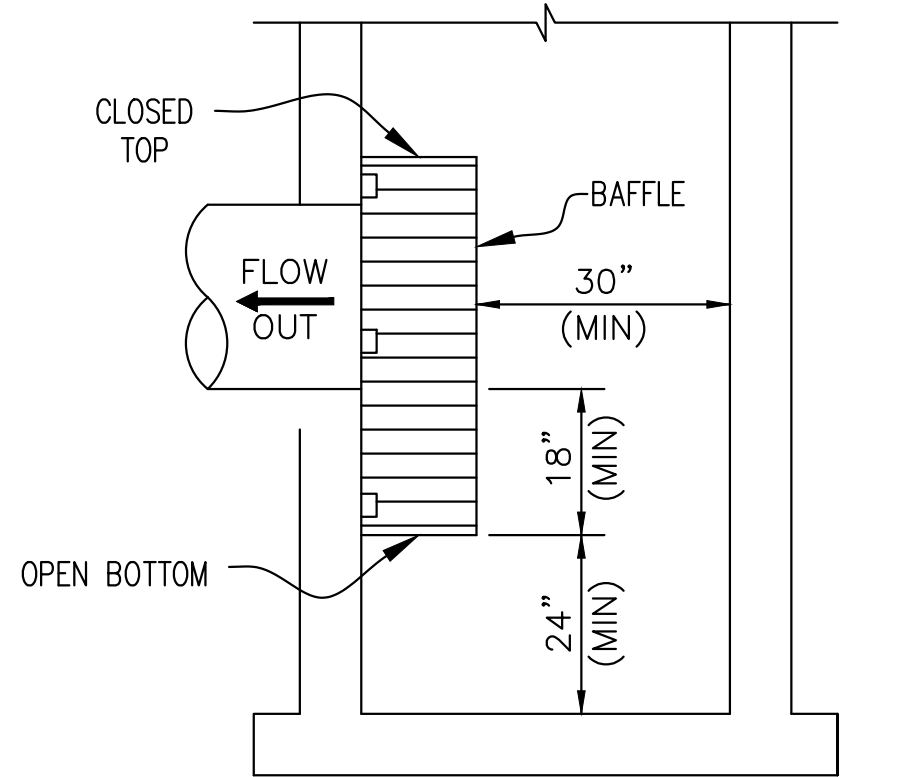
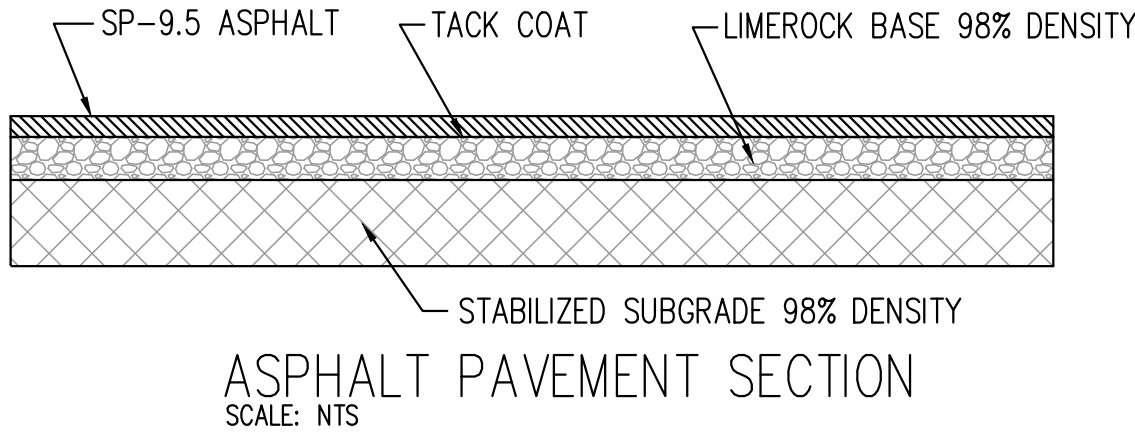
Job Number: 24109.01
File name:
Issued Date: 04-23-2025
Drawn by: A.S
Checked by: T.R.

SHEET NAME
<b>SITE DETAILS</b>
SHEET NUMBER
<b>C-2.2</b>

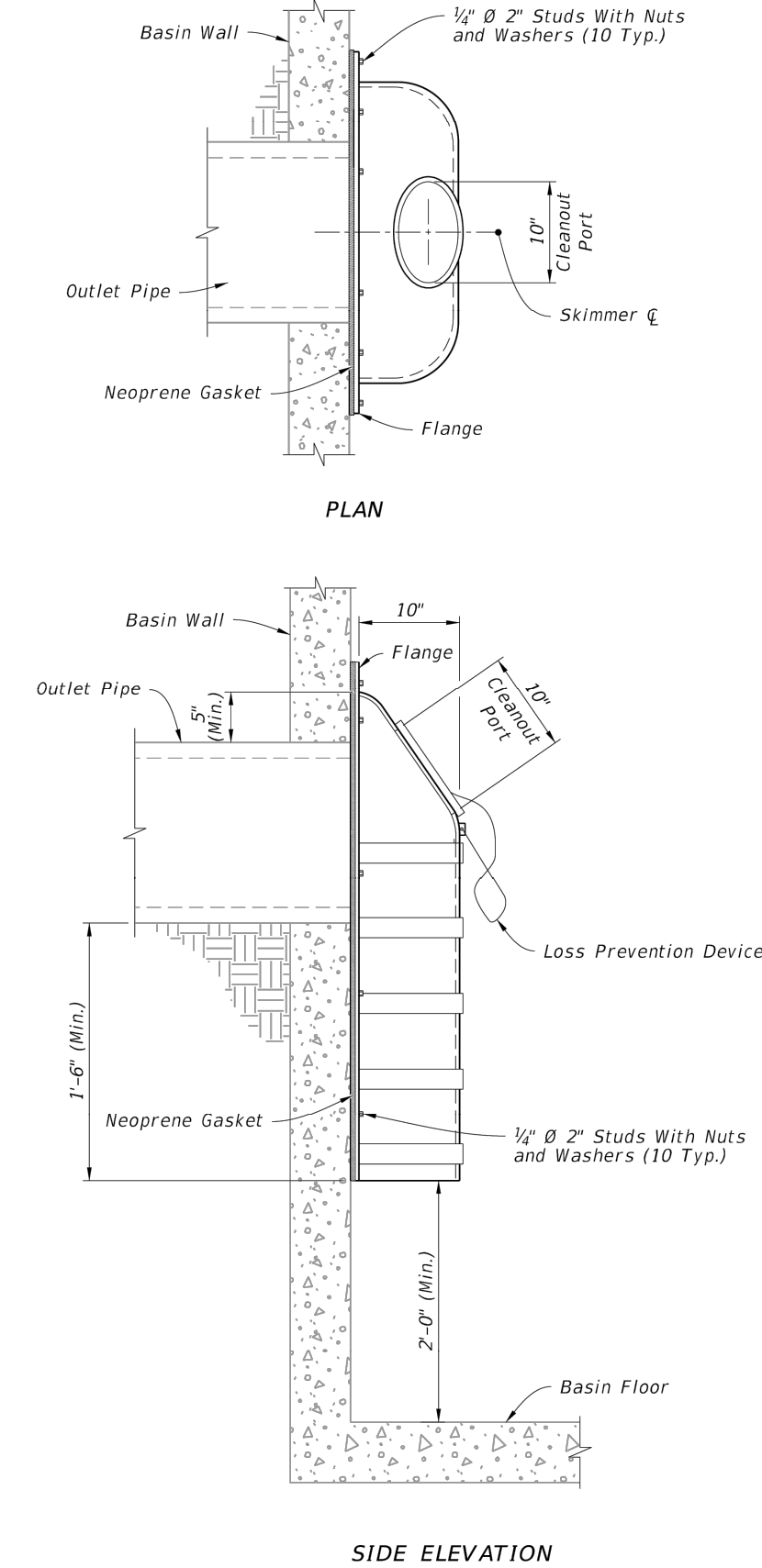
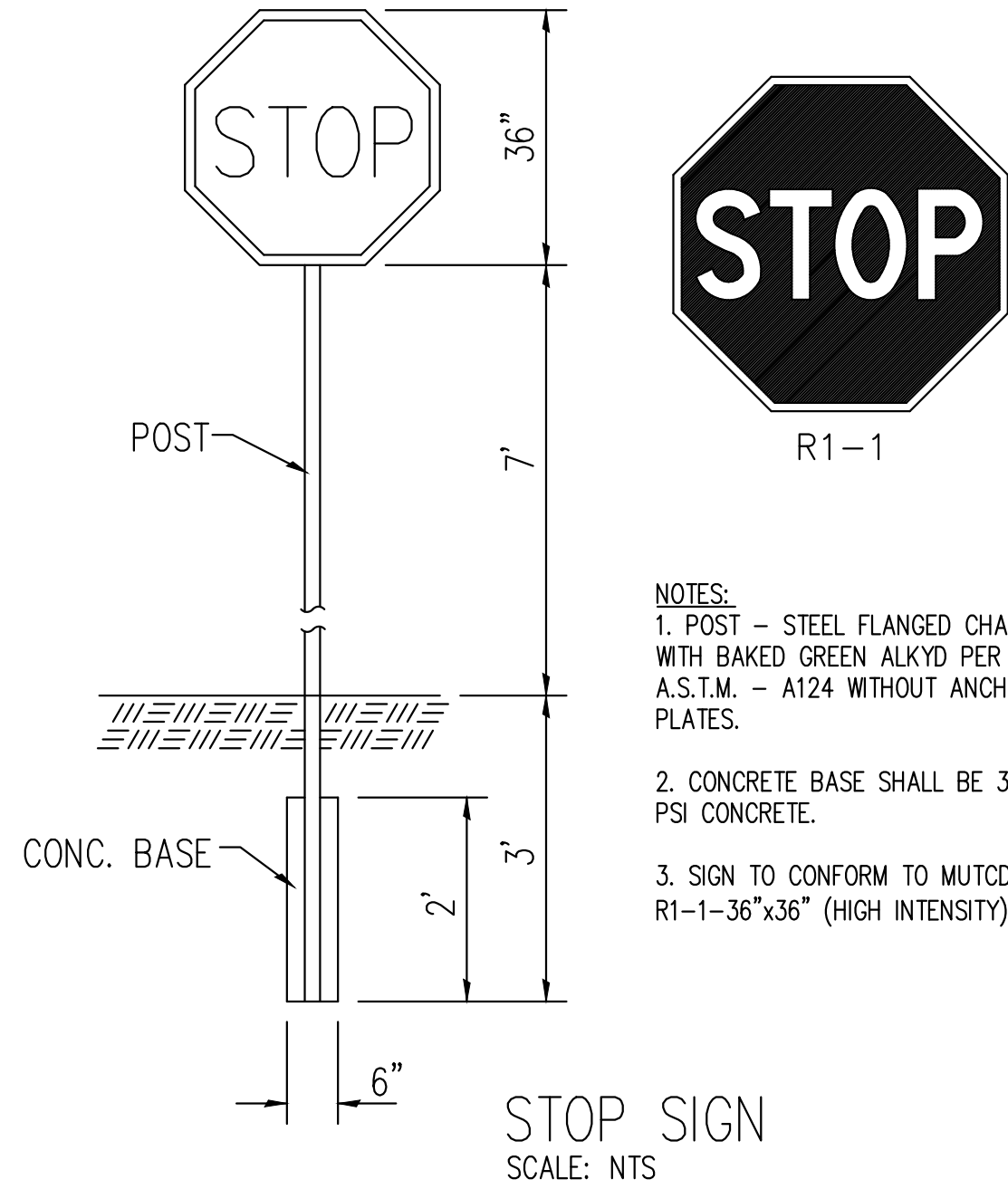
SUBGRADE: 12" STABILIZED SUBGRADE MINIMUM LBR OF 40, COMPACTED TO 98% MAX DRY DENSITY (AASHTO D 1557).

BASE COURSE: 8" LIMEROCK BASE, MINIMUM LBR OF 100, COMPACTED TO 98% MAX DRY DENSITY (AASHTO D 1557).

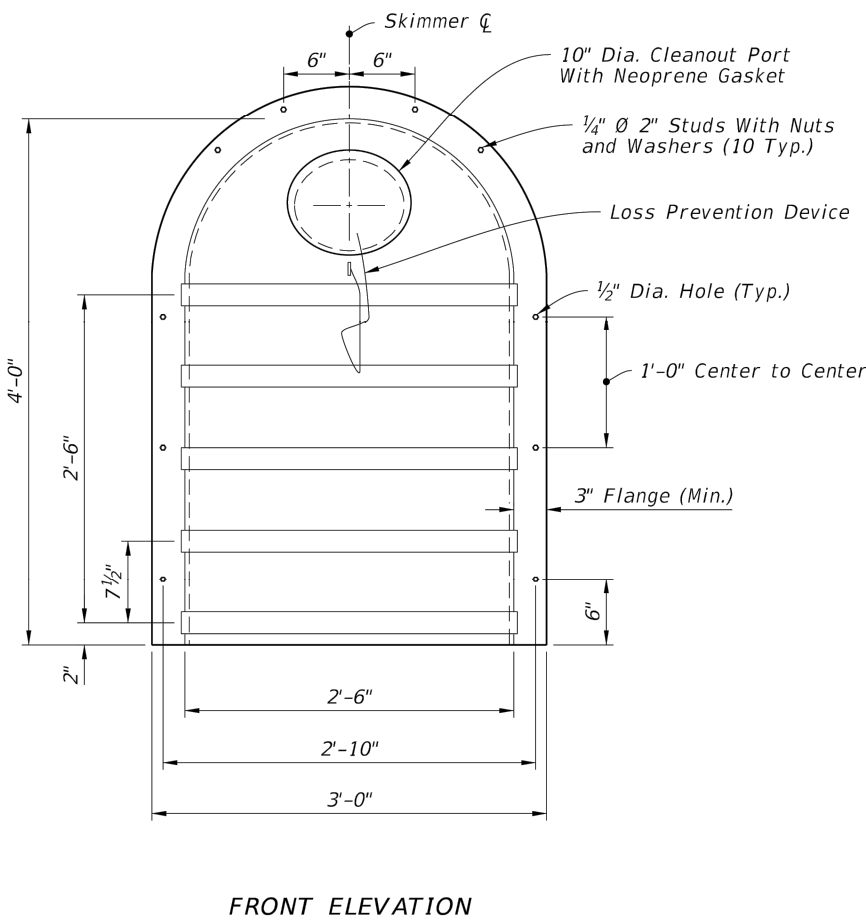
ASPHALT: 2.0" FLORIDA DEPARTMENT OF TRANSPORTATION TYPE SP-9.5 ASPHALTIC CONCRETE, TWO LIFTS



DRAINAGE INLET DETAIL  
SCALE: NTS



NOTE:  
Install a gasket for the cleanout with either a threaded screw-in lid or a lid secured by four stainless steel quick-release latches.



This item has been digitally signed and sealed by John E Flynn, PE on the date adjacent to the seal.  
Printed copies of this document are not considered signed and sealed and the signature must be verified on any electronic copies.

**GRACE ENGINEERING**  
Civil Engineering Consultants

17110 SW 64th Court  
Southwest Ranches, Florida 33331  
GraceEngineeringLLC@gmail.com  
754.200.4534

JOHN E. FLYNN, P.E.  
Florida License No. 63316  
GRACE ENGINEERING, LLC  
Certificate of Authorization No. P225-1200021

LAST REVISION	DESCRIPTION	INDEX	SHEET
11/01/19		443-002	3 of 3

FDOT

FY 2023-24  
STANDARD PLANS

SKIMMERS FOR FRENCH DRAIN OUTLETS

TYPE II SKIMMERS